



38 Nursery Lane, NE10 9TE

Offers Over £115,000

Hive Estates welcomes to the market this beautifully presented two bedroom end of terrace home in Felling, Gateshead. Tucked away on a quiet residential street, it's an ideal choice for first-time buyers or investors alike.

Inside, the property offers generous living space throughout. The bright and airy living room features large windows, a stylish feature fireplace, and modern grey decor with wood effect laminate flooring. Flowing seamlessly from here is a spacious dining room, complete with a built in storage cupboard. The contemporary kitchen is finished to a high standard, with sleek high gloss cabinets, wood effect worktops, white metro tiling with contrasting black grout, and an integrated oven and hob.

Upstairs, you'll find two well proportioned bedrooms. The master bedroom to the front benefits from fitted storage, grey carpets, and plenty of natural light. The second bedroom is equally generous and versatile, ideal as a guest room, home office, or nursery. A modern bathroom with shower over bath and basin is complemented by a separate WC for convenience.

To the rear, a low maintenance decked yard provides the perfect space for outdoor entertaining or relaxing, complete with a handy storage shed. Perfectly positioned for local schools, excellent transport links, and nearby green spaces including Carr Hill Recreation Ground, Albion Street Playing Fields, and Windy Nook Nature Park, this home combines convenience with comfort.

Lounge 14'1" x 14'1" (4.30 x 4.30)

Dining Room 15'9" x 14'1" (4.81 x 4.30)

Kitchen 11'1" x 6'8" (3.40 x 2.05)

Bedroom 1 14'1" x 14'1" (4.30 x 4.30)

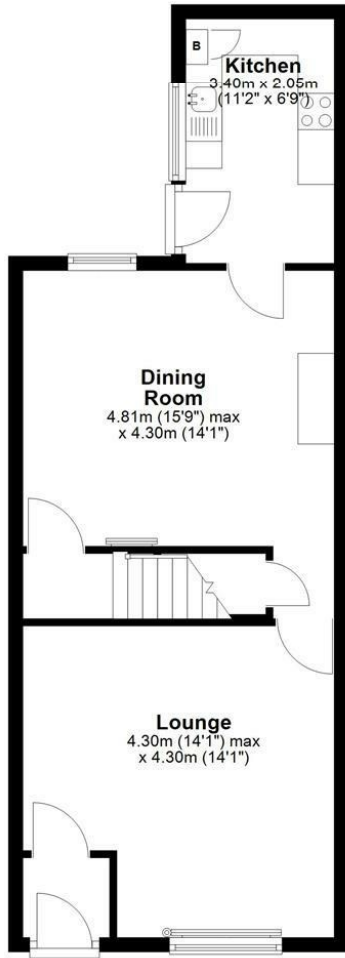
Bedroom 2 12'10" x 9'6" (3.92 x 2.90)

Bathroom 5'4" x 6'8" (1.65 x 2.05)

WC 5'5" x 2'8" (1.66 x 0.83)

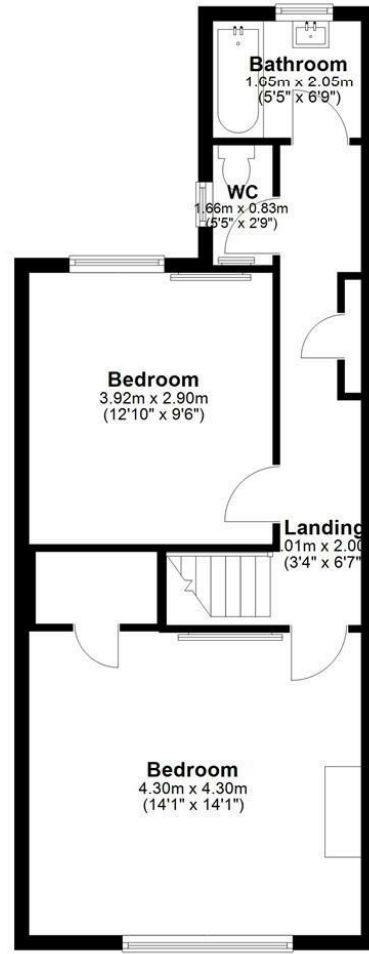
Ground Floor

Approx. 46.8 sq. metres (503.3 sq. feet)



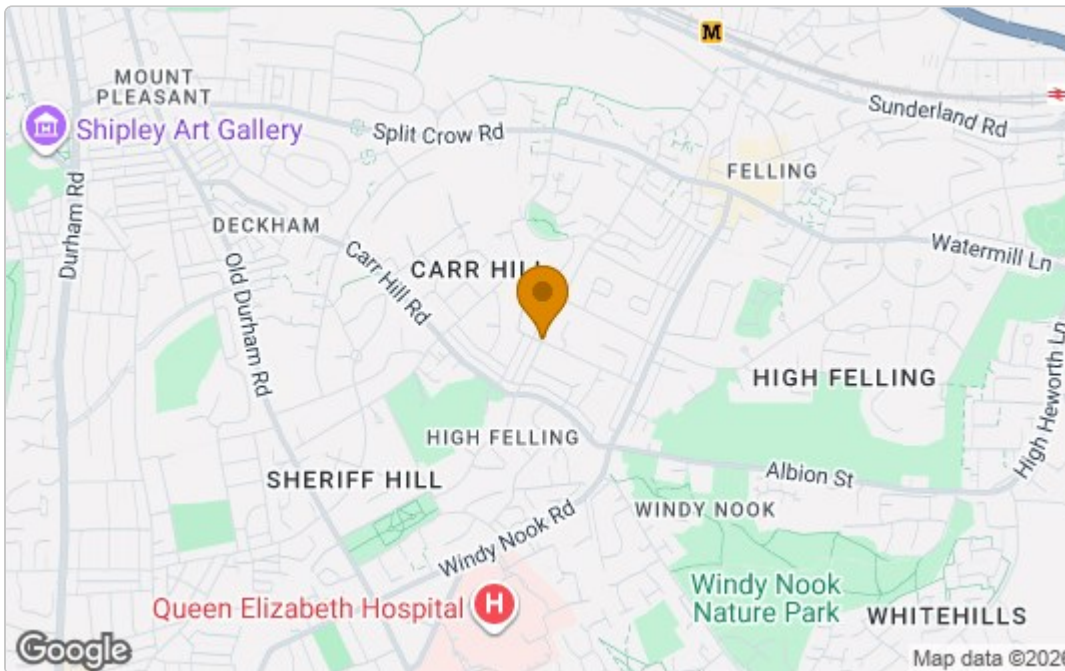
First Floor

Approx. 49.7 sq. metres (535.2 sq. feet)

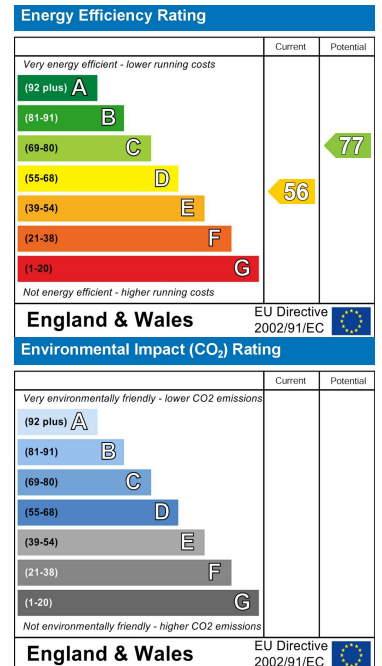


Total area: approx. 96.5 sq. metres (1038.6 sq. feet)

Area Map



Energy Efficiency Graph



These particulars, whilst believed to be accurate are set out as a general outline only for guidance and do not constitute any part of an offer or contract. Intending purchasers should not rely on them as statements of representation of fact, but must satisfy themselves by inspection or otherwise as to their accuracy. No person in this firm's employment has the authority to make or give any representation or warranty in respect of the property.